



ନିଗମ  
**ଶାକ୍ତି**



# ଏମ ସି ସି ବନମାଳୀ ପ୍ରସାଦ , ଖାର୍ତ୍ତ ନଂ-୯, ଢେଙ୍କାନାଳ

( ନିଗମ ଶକ୍ତି ମହିଳା /ତୃତୀୟ ଲିଙ୍ଗୀ ବ୍ୟକ୍ତିଙ୍କ ଦ୍ୱାରା ପରିଚାଳିତ )

ବନମାଳୀ ପ୍ରସାଦ ଏମ ସି ସି (୧.୫ ଟିପିଡ଼ି କ୍ଷମତା ବିଶିଷ୍ଟ) ID- MCC- DKL/DHE/MCC/004



**1** Collect segregated wet waste



**2** Transport wet waste to MCC



**3** Weigh and record incoming wet waste



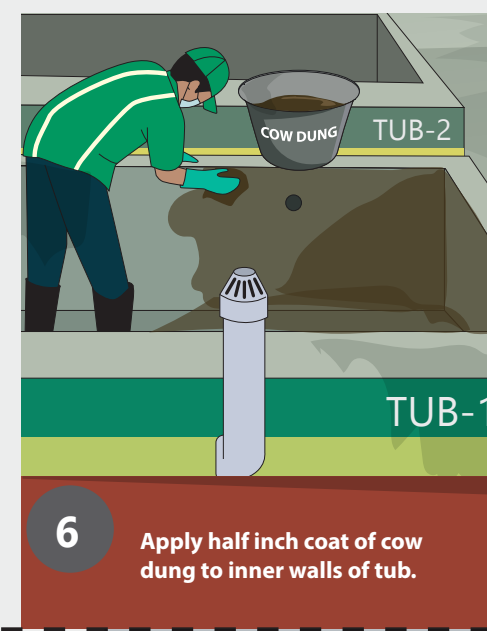
**4** Unload wet waste



**5** Load wet waste on conveyor belt



**5.a.** Shred wet waste



**6** Apply half inch coat of cow dung to inner walls of tub.

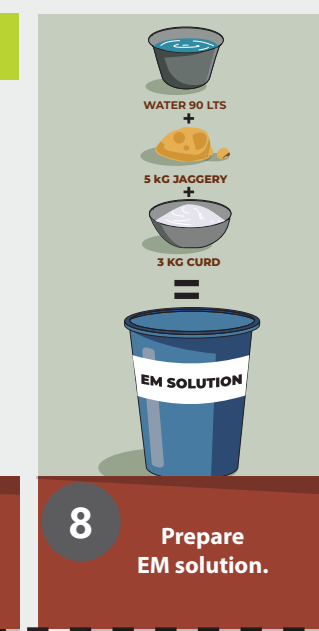


**7** Add shredded waste in tub-1 on day 1, day 8, day 15 likewise in tub- 2 to tub-7, Similarly add shredded waste in tub-8 on day 22, day 29 and day 36 likewise in tub- 8 to tub-14

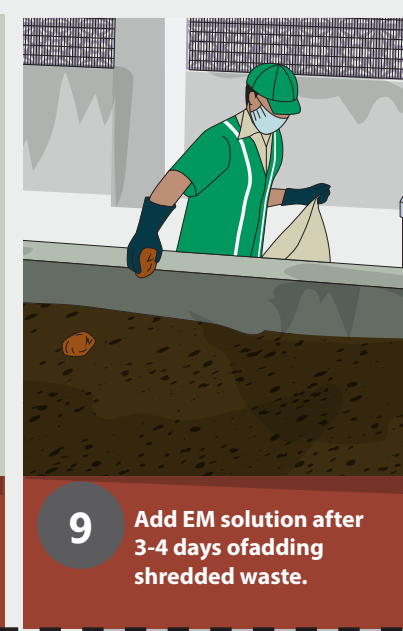
Sequence in which shredded waste has to be put in tub 1-14 compost for day 1-72

Round-1	Round-2
Tub 1 Waste to be added on Day 1 (Day 1), Day 15	ଦୁଗ୍-୧ ଉତ୍ତମ ଚୂର୍ଣ୍ଣ ଉପରେ
Tub 2 Waste to be added on Day 2 (Day 16), Day 18	ଦୁଗ୍-୨ ଉତ୍ତମ ଚୂର୍ଣ୍ଣ ଉପରେ
Tub 3 Waste to be added on Day 3 (Day 17), Day 17	ଦୁଗ୍-୩ ଉତ୍ତମ ଚୂର୍ଣ୍ଣ ଉପରେ
Tub 4 Waste to be added on Day 4 (Day 18), Day 18	ଦୁଗ୍-୪ ଉତ୍ତମ ଚୂର୍ଣ୍ଣ ଉପରେ
Tub 5 Waste to be added on Day 5 (Day 19), Day 19	ଦୁଗ୍-୫ ଉତ୍ତମ ଚୂର୍ଣ୍ଣ ଉପରେ
Tub 6 Waste to be added on Day 6 (Day 20), Day 20	ଦୁଗ୍-୬ ଉତ୍ତମ ଚୂର୍ଣ୍ଣ ଉପରେ
Tub 7 Waste to be added on Day 7 (Day 21), Day 21	ଦୁଗ୍-୭ ଉତ୍ତମ ଚୂର୍ଣ୍ଣ ଉପରେ

**7.a** Repeat the above sequence in which shredded waste is put in



**8** Prepare EM solution.



**9** Add EM solution after 3-4 days of adding shredded waste.



**10** Turn waste upside down using shovel every 3-4 days.



**11** Waste turns into black compost after 45 days Remove compost from the tub using shovel.



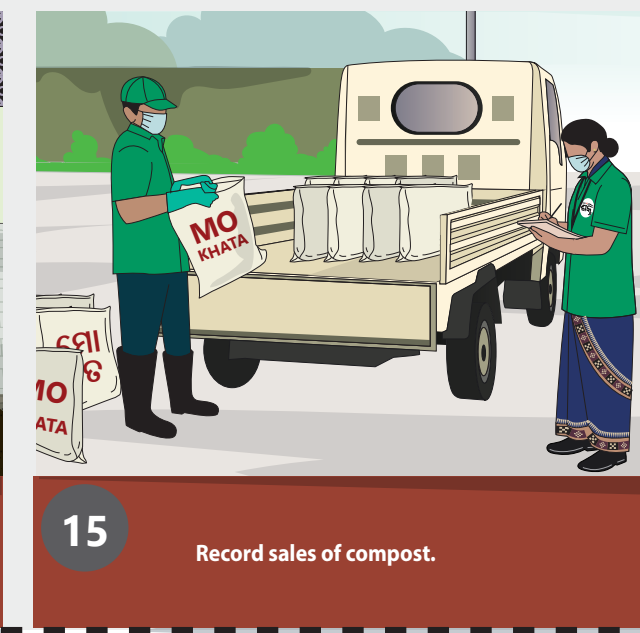
**12** Sun dry the sieved compost.



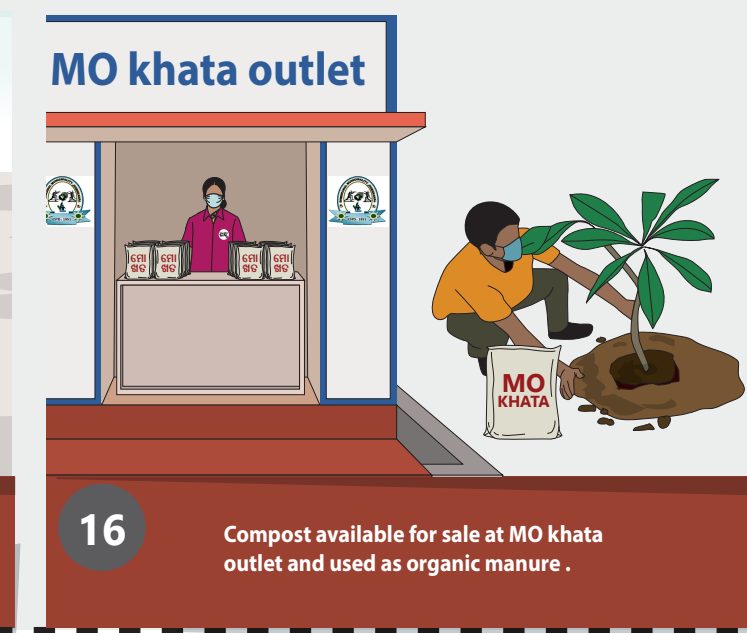
**13** Sieve Compost and add the residue back into tub.



**14** Weigh and pack the dried compost and record the quantity packed.



**15** Record sales of compost.



**16** Compost available for sale at MO khata outlet and used as organic manure .